

UNLOCKING GUILDFORD

MAKING IT EASIER TO GET AROUND GUILDFORD

Guildford is set to experience significant change over the next 20 or so years. The borough's recently submitted local plan proposes around 14,000 additional homes together with major employment growth in the period up to 2034. We recognise that this growth is likely to place even more pressure on our roads and that it therefore must go hand in hand with positive action to improve the borough's infrastructure.

Our proposals to 'unlock' Guildford will help to ease traffic congestion, encourage more people to take the bus and will increase the town and its roads' resilience to flooding.

We have developed a package of improvements worth approximately £20m. The Enterprise M3 Local Enterprise Partnership has provisionally allocated £12.5m towards the enhancements, the rest of the funding is expected to come from Guildford Borough Council, bus operators and the Environment Agency.

Once the consultation has closed, we will consider your feedback and finalise the proposed improvements. Guildford Borough Council and Surrey County Council will subsequently apply for funding for the improvements from Enterprise M3. If we're successful, construction work on the first set of improvements is likely to start in 2019 and would be completed in phases up until spring 2021.



HAVE YOUR SAY

We'd like to know your thoughts and suggestions on our Unlocking Guildford proposals. Please complete a questionnaire online or at a public exhibition by Sunday 4 March 2018. Visit surreycc.gov.uk/guildfordtransportschemes or search online for 'Unlocking Guildford'.

For any questions regarding Unlocking Guildford please contact Zac Ellwood, Major Projects Portfolio Manager, at zac.ellwood@guildford.gov.uk

If you would like any of this information in a different version (for example, large print) please telephone 03456 009 009.





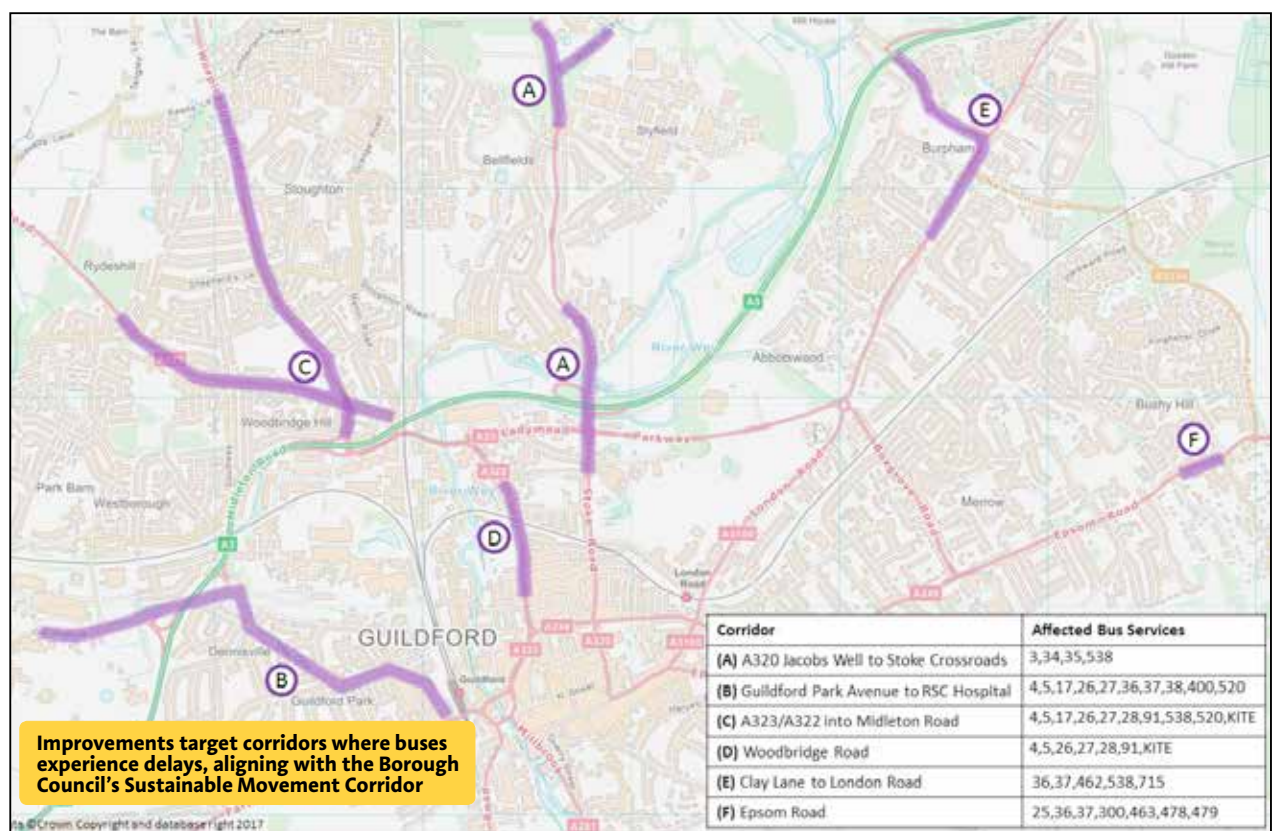
UNLOCKING GUILDFORD

IMPROVING OUR BUS NETWORK

Buses are a vital mode of transport for the local area, carrying roughly five million passengers per year and connecting neighbouring towns and villages with Guildford. Every day 15,000 people travel on buses in Guildford, and these numbers are increasing each year.



Delays to bus services make it difficult to meet timetables



Proposed improvements

We know that having reliable services are essential to passengers, as well as having access to accurate up-to-the-minute travel information. We also want to make sure that the key routes which serve Guildford and its surrounding towns have attractive, clean and well-lit passenger waiting areas, and are easily accessible with conveniently located bus stops.

These improvements could include:

Bus reliability and improved journey times

- Intelligent bus priority at traffic signals
- Junction improvements at bottlenecks which will benefit all road users
- Bus-friendly traffic management at pinch points where buses experience delay

Better passenger information

- High quality printed timetables, maps and fares information at bus stops
- Increased use of real time passenger information, with displays at bus shelters, shopping centres and at main employment centres
- Audible and visual next stop information on buses
- Bus arrival information through SMS text messaging

Improved passenger infrastructure

- New bus shelters with improved seating and lighting
- Improved pedestrian links between bus stops and key locations
- Upgraded bus fleets which are more comfortable for passengers
- An integrated smart and contactless ticketing system





UNLOCKING GUILDFORD

A331 BLACKWATER VALLEY RELIEF ROAD JUNCTION IMPROVEMENTS

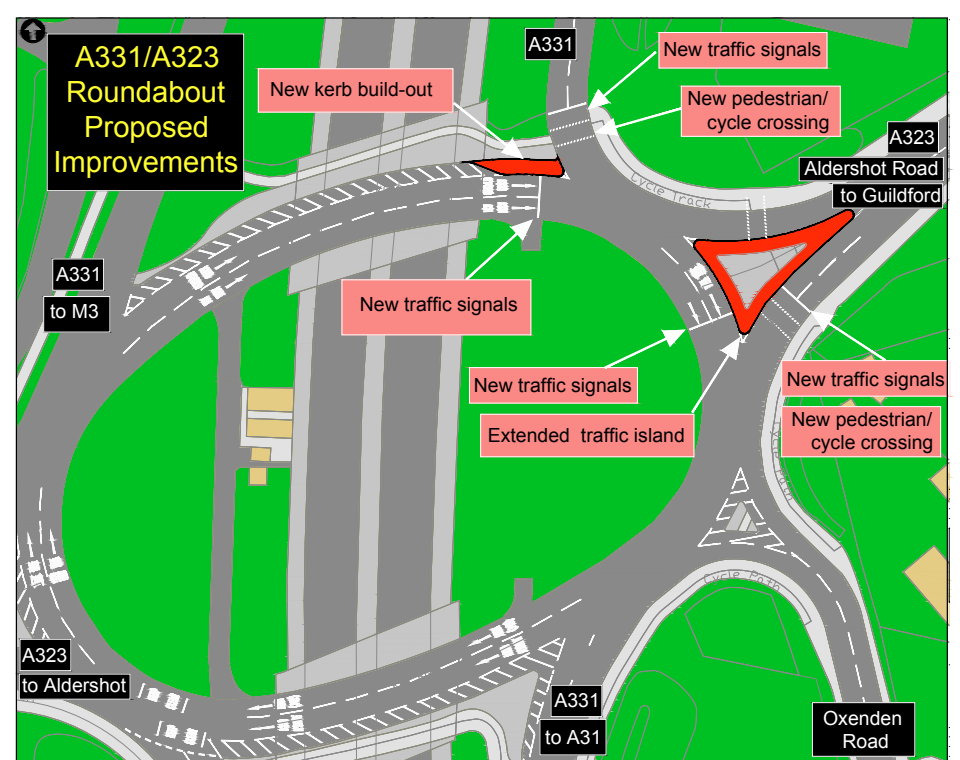
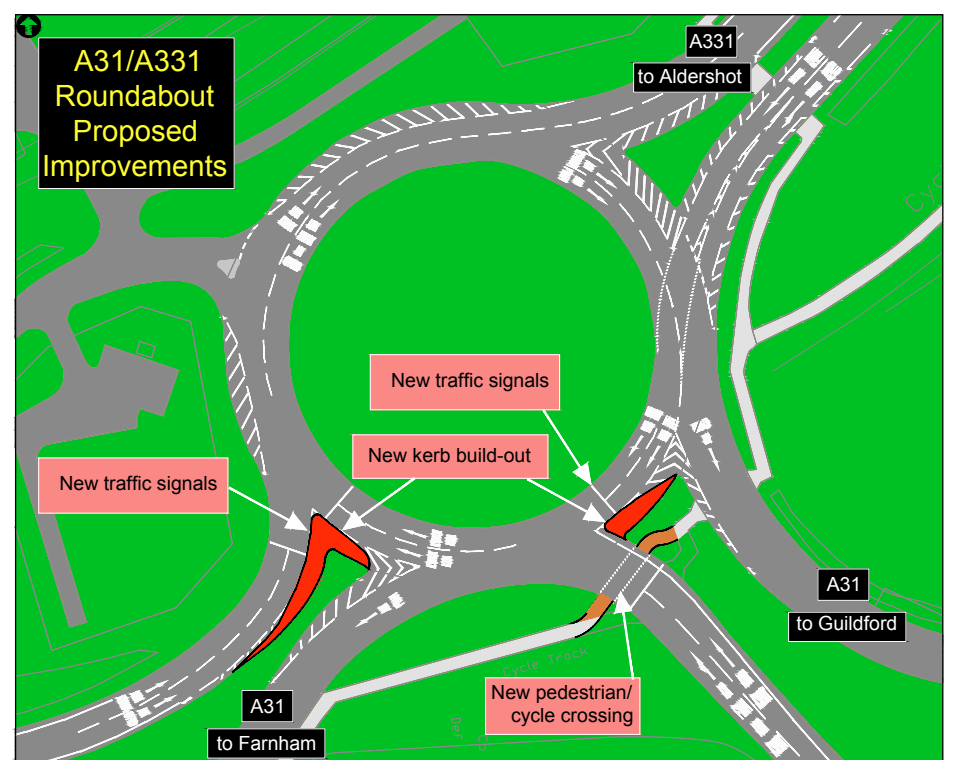
Two junctions on the A331 Blackwater Valley Relief Road have long suffered from congestion, particularly during the weekday rush hours. As new residential development in the area is expected which will increase demand on the roads, the proposals aim to help the road network in Ash and Tongham and the surrounding area by improving the following junctions:

- 1. A31/A331 roundabout near Farnham:** Significant delays are caused by the high number of vehicles joining the roundabout from the A331 and heading towards Farnham. It also causes queues along the slip road back onto the A31 Hog's Back.
- 2. A331/A323 roundabout between Ash and Aldershot:** Both Oxenden Road and the A323 Aldershot Road in Ash suffer from congestion and queuing during peak periods. This is mainly due to the number of vehicles joining the roundabout from the west to travel along the A331, or into Aldershot from the A331.

Proposed improvements

We are considering installing traffic signals on some approaches to the junctions which will help clear congestion. They might only need to be used during rush hours. During this work, we may also look to upgrade the drainage and road surface along the A31 Hog's Back. The improvements aim to deliver the following benefits:

- Quicker and more reliable journey times for vehicles joining the A331 from the A31 and using the A331/A323 roundabout.
- Improved road safety by reducing incidences of slip-road traffic queuing back onto the A31 and A331.





GUILDFORD
BOROUGH



SURREY

UNLOCKING GUILDFORD

TOWN CENTRE APPROACHES

Using a traffic management system with the latest technology will mean we're better equipped to manage the roads effectively and alleviate congestion. Without a new and upgraded system congestion is likely to get worse and journey times increase as roads get busier.



Example of a variable message sign in use

Proposed improvements

We are planning to install and upgrade our traffic management systems to use the latest technology at the key locations where people decide which route they use to travel around Guildford.

This will enable us to react to traffic incidents in a number of ways, including:

- Variable message signs to inform drivers of a collision or congestion and direct them along less busy routes
- The ability to alter traffic light phasing to help clear queues of traffic

These measures will improve journey time reliability and allow for faster recovery after incidents.

TOWN CENTRE FLOOD ALLEVIATION

The Environment Agency is leading a partnership including Surrey County Council and Guildford Borough Council to address flooding and help protect buildings. Guildford has a history of flooding, most recently in December 2013 when 92 properties flooded.



Floodwater from the River Wey

Proposed improvements

Through a mixture of permanent and temporary flood defence walls, this scheme aims to reduce the risk of flood water entering homes and businesses, and disrupting transport links. It also supports the economic development and regeneration of the town centre. The improvements are expected to benefit key parts of the road network through Guildford town centre, including the A281 Millbrook.

The design approach aims to create a better place. It promotes connections between the town and the river and links communities with the environment, which will ultimately benefit both people and wildlife.

